

NEED HELP WITH HOUSING?

Central Intake works together to connect people to homelessness support services across the NT.



WHO WE HELP

- People currently housed, but their tenancy is at risk.
- People who are currently experiencing homelessness (including couch surfing, living in a car or sleeping rough).

CENTRAL INTAKE

- Is a single entry access to homelessness support across the NT.
- Works with local services, not replace them.
- Is not a housing provider.
- Is a pathway to the right support for you.
- Is the first point for intake and referral.
- Has a secure data storage network.



NORTHERN TERRITORY

**Central
Intake**

specialist homelessness
support service

Visit us at Day Hubs in Darwin and Alice Springs
or get help over the phone or online:



1800 920 333



NEED HELP

WITH HOUSING?



NORTHERN TERRITORY

Central Intake

specialist homelessness
support service



1800 920 333

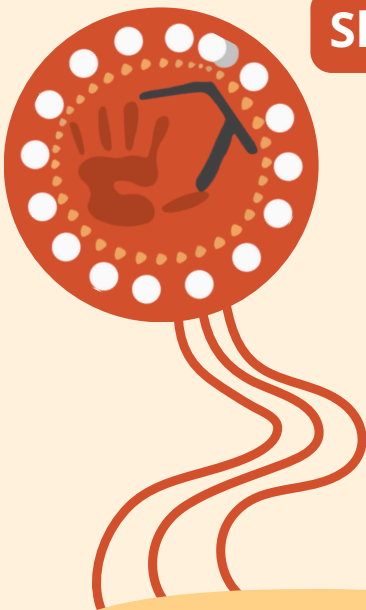


Are you couch surfing?

Worried about losing your home?

Sleeping rough?

Looking for housing support?



WHY CHOOSE US

- We make it easier to get help.
- We respect your story and your privacy.
- We help before things get worse.
- We offer culturally safe services.
- We will not turn you away.
- We use smart tools to understand your needs.

YOUR RIGHTS

- You choose information you share.
- You can stop or skip questions anytime.
- We work with your existing support networks.
- We offer trauma-informed care – safe, respectful, and supportive.

We know that every person's experience of homelessness is different.

We will walk alongside you, to help get you the support that you need.

Supported by:



In partnership with:

